

Symphonie fantastique: idée fixe

Hector Berlioz

Allegro agitato ♩ = 132

Spieler 1

Melodie in C

Melodie in B

Melodie in Es

Schlagwerk

Allegro agitato ♩ = 132

Klavier

7

Spieler 2

C

B

Es

Schlgw.

Klav.

13

C

B

Es

Spieler 3

Schlwg.

Klav.

Detailed description: This block contains the musical notation for measures 13 through 17. The vocal parts (C, B, Es) are written in treble clef with a key signature of three sharps (F#, C#, G#). They feature long, sustained notes with ties across measures. The piano accompaniment (Schlgw. and Klav.) is in the lower staves. The Schlgw. part has a simple rhythmic pattern of eighth notes and quarter notes. The Klav. part features a more complex rhythmic pattern with eighth notes and quarter notes, often beamed together. The label 'Spieler 3' is placed above the vocal staves in measures 14, 15, and 16.

18

C

B

Es

Spieler 4

Schlwg.

Klav.

Detailed description: This block contains the musical notation for measures 18 through 22. The vocal parts (C, B, Es) continue with long, sustained notes and ties. The piano accompaniment (Schlgw. and Klav.) maintains its rhythmic pattern. The label 'Spieler 4' is placed above the vocal staves in measures 19, 20, and 21.

23

Spieler 5

C

B

Es

Schlgw.

Klav.

27

Spieler 6

C

B

Es

Schlgw.

Klav.

36

C

B

Es

Schlgw.

Klav.

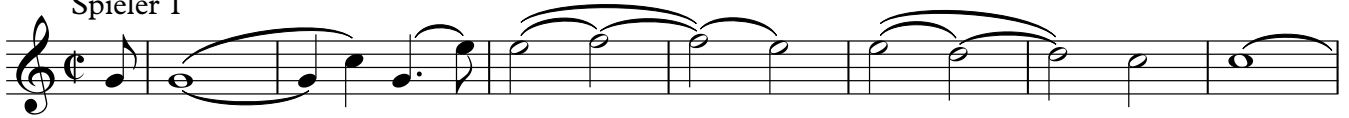
Melodie in C

Symphonie fantastique: idée fixe

Hector Berlioz

Allegro agitato ♩ = 132

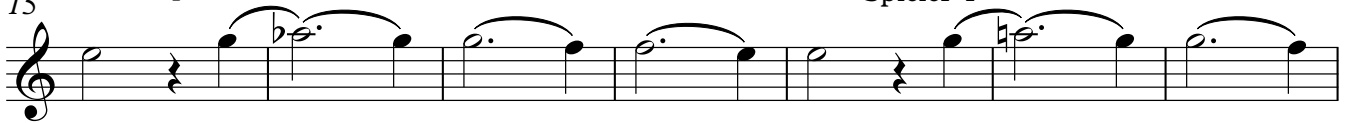
Spieler 1



8 Spieler 2

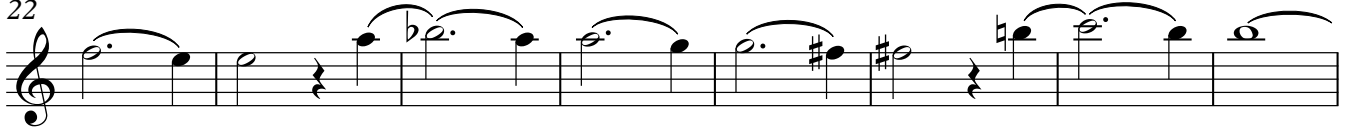


15 Spieler 3



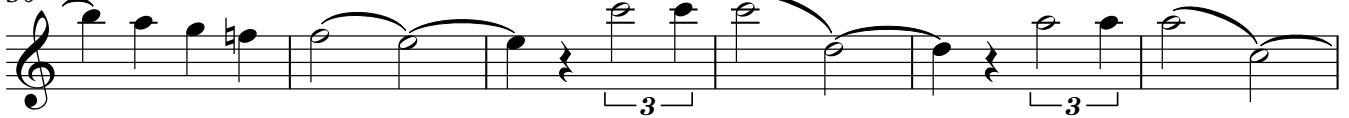
Spieler 4

22 Spieler 5



Spieler 6

30 Spieler 7



36

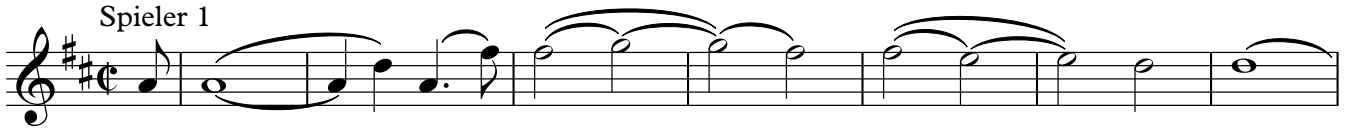


Melodie in B Symphonie fantastique: idée fixe

Hector Berlioz

Allegro agitato ♩ = 132

Spieler 1



8

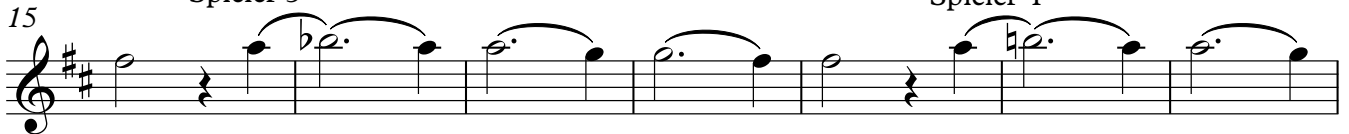
Spieler 2



15

Spieler 3

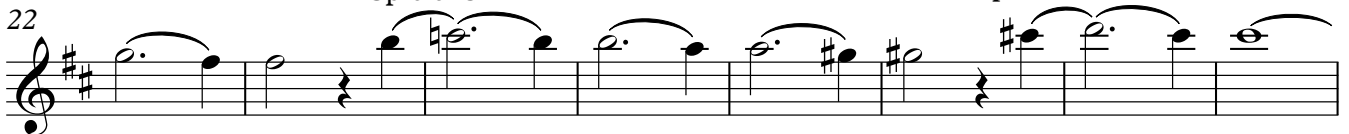
Spieler 4



22

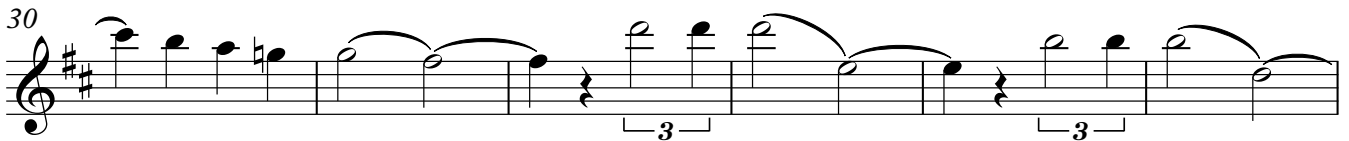
Spieler 5

Spieler 6



30

Spieler 7



36



Melodie in Es Symphonie fantastique: idée fixe

Hector Berlioz

Allegro agitato ♩ = 132

Spieler 1



8 Spieler 2



15 Spieler 3



Spieler 4

22 Spieler 5



Spieler 6

30 Spieler 7



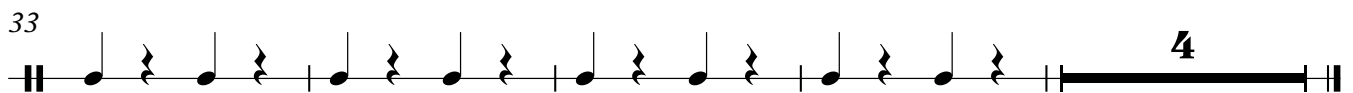
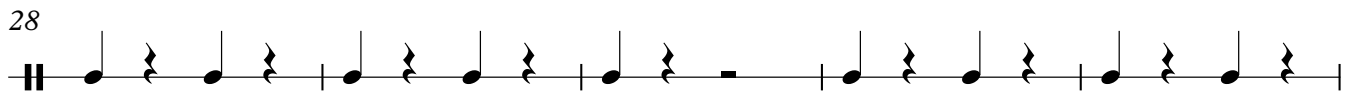
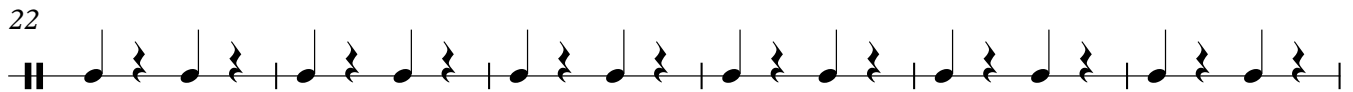
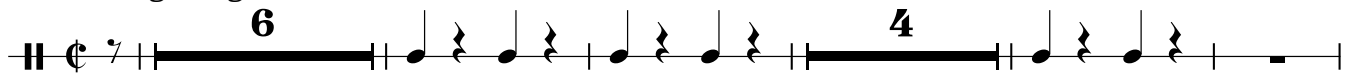
36



Schlag- werk Symphonie fantastique: idée fixe

Hector Berlioz

Allegro agitato ♩ = 132



Symphonie fantastique: idée fixe

Hector Berlioz

Allegro agitato $\text{♩} = 132$

Measures 1-13 of the piano introduction. The score is in common time (C) and features a 6/8 time signature for the first two measures, followed by a 4/8 time signature for the next two measures, and then a 4/4 time signature for the final measure. The music is written for piano (Klavier) and includes a treble and bass staff. The first two measures are marked with a '6' above and below the staff, indicating a 6/8 time signature. The next two measures are marked with a '4' above and below the staff, indicating a 4/8 time signature. The final measure is marked with a '4' above and below the staff, indicating a 4/4 time signature.

Measures 14-19. The music continues with a treble and bass staff. The treble staff has a whole rest in measures 14 and 15, and a half rest in measure 16. The bass staff has a whole rest in measures 14 and 15, and a half rest in measure 16. The music is written in common time (C) and includes a treble and bass staff.

Measures 20-24. The music continues with a treble and bass staff. The treble staff has a whole rest in measures 20 and 21, and a half rest in measure 22. The bass staff has a whole rest in measures 20 and 21, and a half rest in measure 22. The music is written in common time (C) and includes a treble and bass staff.

Measures 25-29. The music continues with a treble and bass staff. The treble staff has a whole rest in measures 25 and 26, and a half rest in measure 27. The bass staff has a whole rest in measures 25 and 26, and a half rest in measure 27. The music is written in common time (C) and includes a treble and bass staff.

Measures 30-34. The music continues with a treble and bass staff. The treble staff has a whole rest in measures 30 and 31, and a half rest in measure 32. The bass staff has a whole rest in measures 30 and 31, and a half rest in measure 32. The music is written in common time (C) and includes a treble and bass staff.

Measures 35-39. The music continues with a treble and bass staff. The treble staff has a whole rest in measures 35 and 36, and a half rest in measure 37. The bass staff has a whole rest in measures 35 and 36, and a half rest in measure 37. The music is written in common time (C) and includes a treble and bass staff.